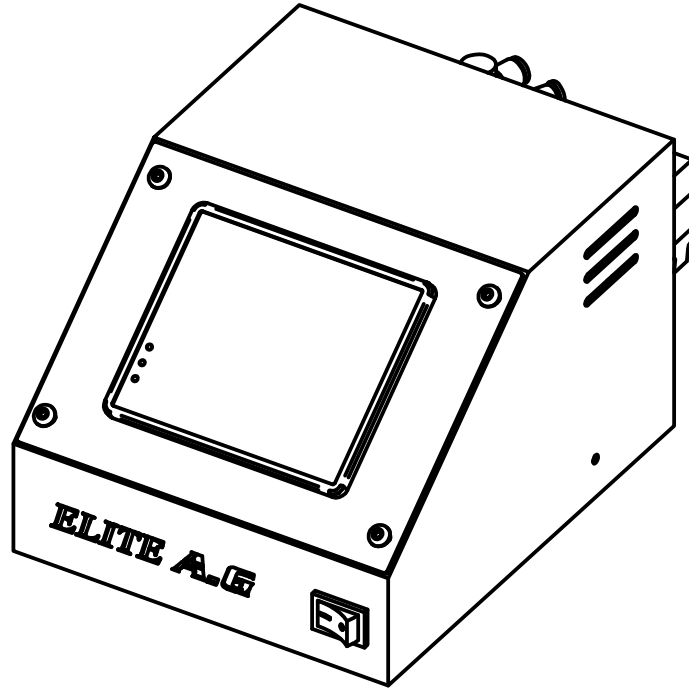


# *ELITE* A.G



## EL-061

### INSTRUCTION MANUAL

Please read this manual before using.  
Please keep this manual within easy reach for quick reference.

ENGLISH

YONTEM MAKINE SERVICE NETWORK  
SERVICE HOTLINE : +90 212 433 7743  
: +90 212 552 7979  
: +90 506 137 8400

E-MAIL : [iletisim@yontemmakine.com](mailto:iletisim@yontemmakine.com)  
WEB : [www.yontemmakine.com](http://www.yontemmakine.com)

## **SAFETY INSTRUCTIONS**

**This instruction manual and the indications and symbols that are used on the machine itself are provided in order to ensure safe operation of this machine and to prevent accidents and injury to yourself or other people.**

### **CAUTION**

This machine should only be used by operators who have received the necessary training in safe use beforehand.

Attach all safety devices before using the sewing machine. If the machine is used without these devices attached, injury may result.

Do not touch any of the moving parts or press any objects against the machine while sewing, as this may result in personal injury or damage to the machine.

### **MAINTENANCE INSPECTION**

Maintenance and inspection of the device should only be carried out by a qualified technician.

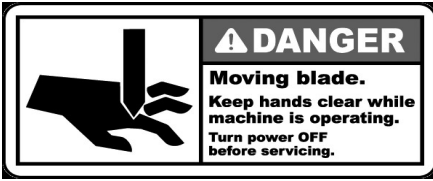
Use only the proper replacement parts as specified by Elite A.G.

If any safety devices have been removed, be absolutely sure to re-install them to their original positions and check that they operate correctly before using the device.

Any problems in device operation which result from unauthorized modifications to the device will not be covered by the warranty.

## WARNING LABELS

Please follow the instructions on the labels at all times when using the device. If the labels have been removed or are difficult to read please contact ELITE A.G.



## INSTALLATION

Parts installation should only be carried out by a qualified technician.

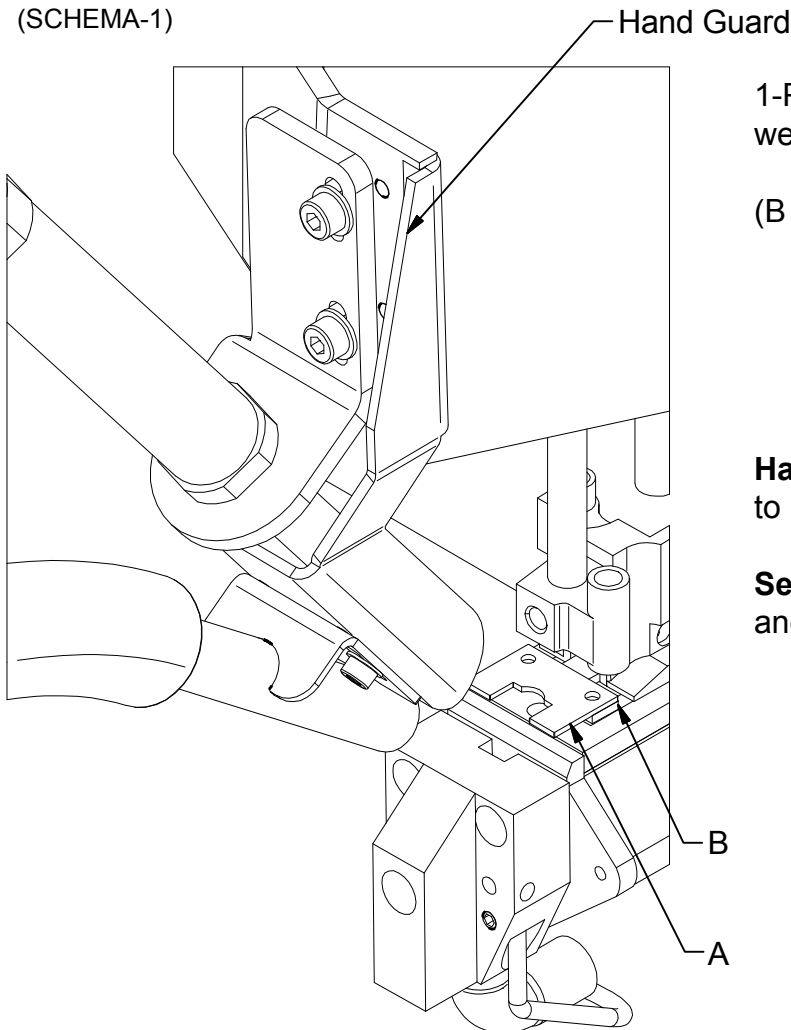
Please contact Elite A.G. for any electrical problem that may need to be repaired.

Do not connect the power cord until installation is complete, otherwise the device may operate if the cut switch is depressed by mistake, which could result in injury.

All cord should be secured at least 25mm away from any moving parts. Furthermore, do not excessively bend the cable or secure it too firmly with staples, otherwise there is the danger that fire or electric shocks could occur.

Be sure to connect the ground. If the ground connection is not secure, you run the risk of receiving a serious electric shock, and problems with correct operation may also occur.

(SCHEMA-1)



1-Plate a will be attached to plate b by welding. (SCHEMA-1)

(B : Presser Food Yielding Section)

**Hand Guard** : Movable blade protection is made to protect your hands.

**Sensor** : Manual cut will not work if system on and sensor active.

## Reliability characteristic data for: Air cylinder

- Model number** : Standard type/CJ2 series  
 \_\_\_\_\_ : Low friction type/CJ2Q series  
 \_\_\_\_\_ : Low-speed cylinders/CJ2X series

### B10 data

Based on the following endurance test results of the cylinder CJ2 series, and assuming a failure mode following the Weibull distribution the following B10 data has been estimated. (90% confidence level)

	B10
Standard type/CJ2 series	22.8 million cycles
Low friction type/CJ2Q series	4.1 million cycles
Low-speed cylinders/CJ2X series	0.8 million cycles

#### NOTE:

The estimated reliability data provided is only applicable to the component in the stated operating conditions. Use of this data for any assessment under standards or otherwise, is at the sole risk of the user. This product is not a safety component and is not supplied to provide a safety function.

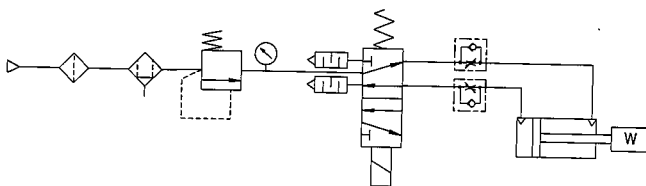
### Endurance test results

For reference

- Standard type: 15 pieces were tested up to 25 million cycles, and found to have zero failure.
- Low friction type: 10 pieces were tested up to 5 million cycles, and found to have zero failure.
- Low-speed cylinders: 10 pieces were tested up to 1 million cycles, and found to have zero failure.

### Endurance test conditions

#### 1) Test circuit



- 2) Pressure: 0.5MPa
- 3) Lubrication: None
- 4) Air supply: Dry air
- 5) Operating freq.: CJ2&CJ2Q : 120times / sec.  
CJ2X : 60 times / sec.
- 6) Laboratory: Life test room
- 7) Ambient temp.: Normal temp. (13 to 33 °C)
- 8) Load:

CJ2&CJ2Q : The load whose lateral load applied to the bushing is 1/40 of the maximum theoretical output/  
 CJ2X : No load

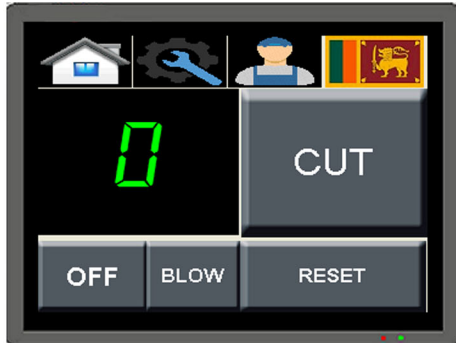
Prepared	T. MATSUDA Feb-24-2010
Checked	
Approved	T. Sato Feb-24-2010

***ELITE* A.G**

**USER MANUAL**



-Device will not start before press to continue



CUT

Manuel cut.It will not work if fabric sensor on. Need to SYSTEM OFF for use free.



Push 0.3 secs. to decrease 1 by 1. Push 2 secs. to reset.

OFF

System ON/OFF push 2 secs. OFF mode will cancel sensors and security functions.

BLOW

Manuel vacuum.

RESET

Reset operation.



Homepage.



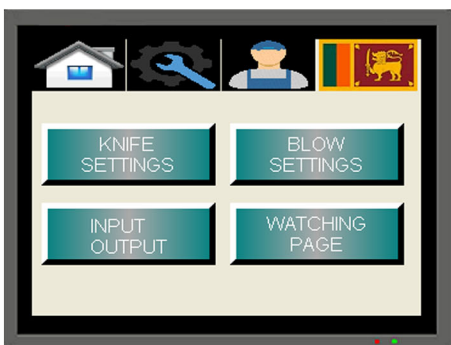
Settings menu.



Function menu.



Language : English / Turkish



KNIFE SETTINGS

Adjust knife time and steps.

BLOW SETTINGS

Adjust blow time and steps.

INPUT OUTPUT

Check system hardware ( Sensors and valves )

WATCHING PAGE

Technician menu to check system working OK or NOT.



**BLOW ENABLED!**

If you use FIRST CUT or END CUT single BLOW will CANCEL automaticly.

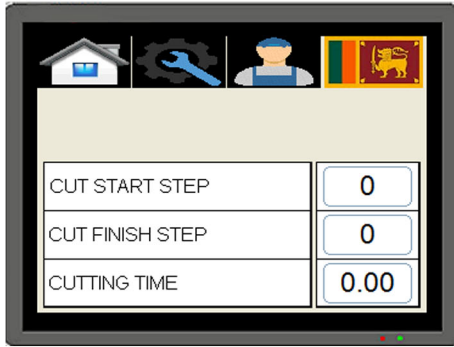
**CUT START ENABLED!**

FIRST CUT ON / OFF

**CUT FINISH ENABLED!**

END CUT ON / OFF

**CUT START BLOW ENABLED!**



CUT START STEP

35 DEFAULT

-ENTER STITCH QUANTITY YOU WANT TO CUT THREAD FOR FIRST CUTTING.

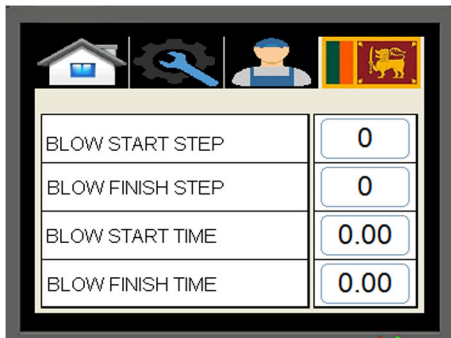
CUT FINISH STEP

45 DEFAULT

-ENTER STITCH QUANTITY YOU WANT TO CUT THREAD FOR END CUTTING.

CUTTING TIME

-KNIFE CUTTING TIME. 0.04 SEC DEFAULT



BLOW START STEP

3 DEFAULT

-ENTER STITCH QUANTITY YOU WANT TO START THREAD VACUUM AT FIRST CUTTING.

BLOW FINISH STEP

40 DEFAULT

-ENTER STITCH QUANTITY YOU WANT TO START THREAD VACUUM AT END CUTTING

BLOW START TIME

2.5 SEC DEFAULT

-ENTER VACUUM ACTIVE TIME AFTER BLOW START STEP. VACUUM WILL STOP AUTOMATICLY AFTER CUT.

BLOW FINISH TIME

2 sec DEFAULT

-ENTER VACUUM ACTIVE TIME AFTER BLOW STOP STEP. VACUUM WILL STOP AUTOMATICLY AFTER CUT.

Rotation sensor	X0	
Optical sensor	X1	
Rotation sensor	X2	
Cutting button	X3	
Reset button	X4	
Cutting valve	Y0	
Blow valve	Y1	

COUNTER RESET

COUNTER RESET

-To reset general counter.

These INPUTS and OUTPUTS original from PLC. You can use as a electronic schema.

You can INSTALL extra button for CUT and BLOW with connecting to X3 (CUT) and X4 (RESET).

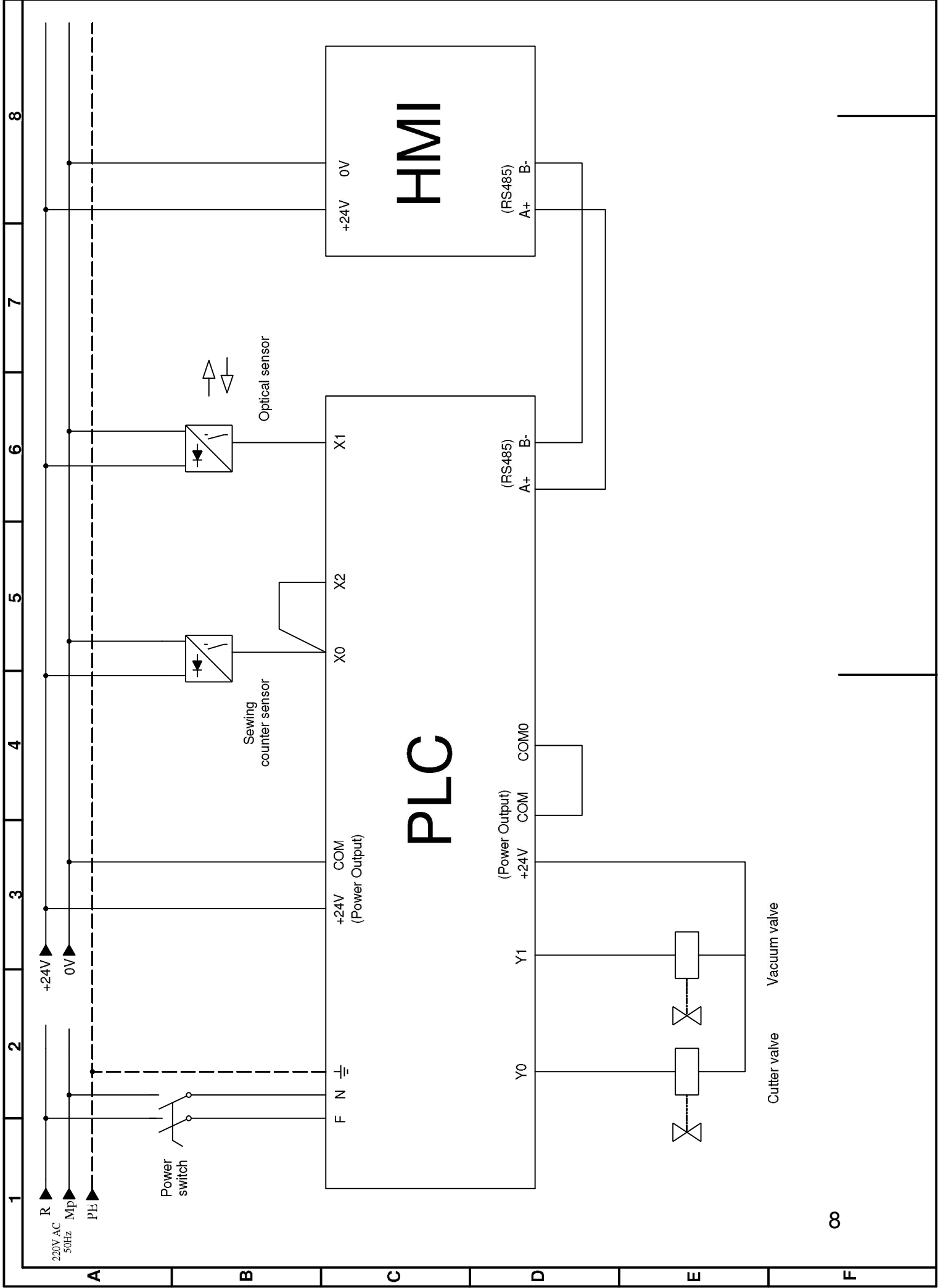


This is technician menu to see sensors sensivity and check for system OK or NOT.

*ELITE* **A.G**

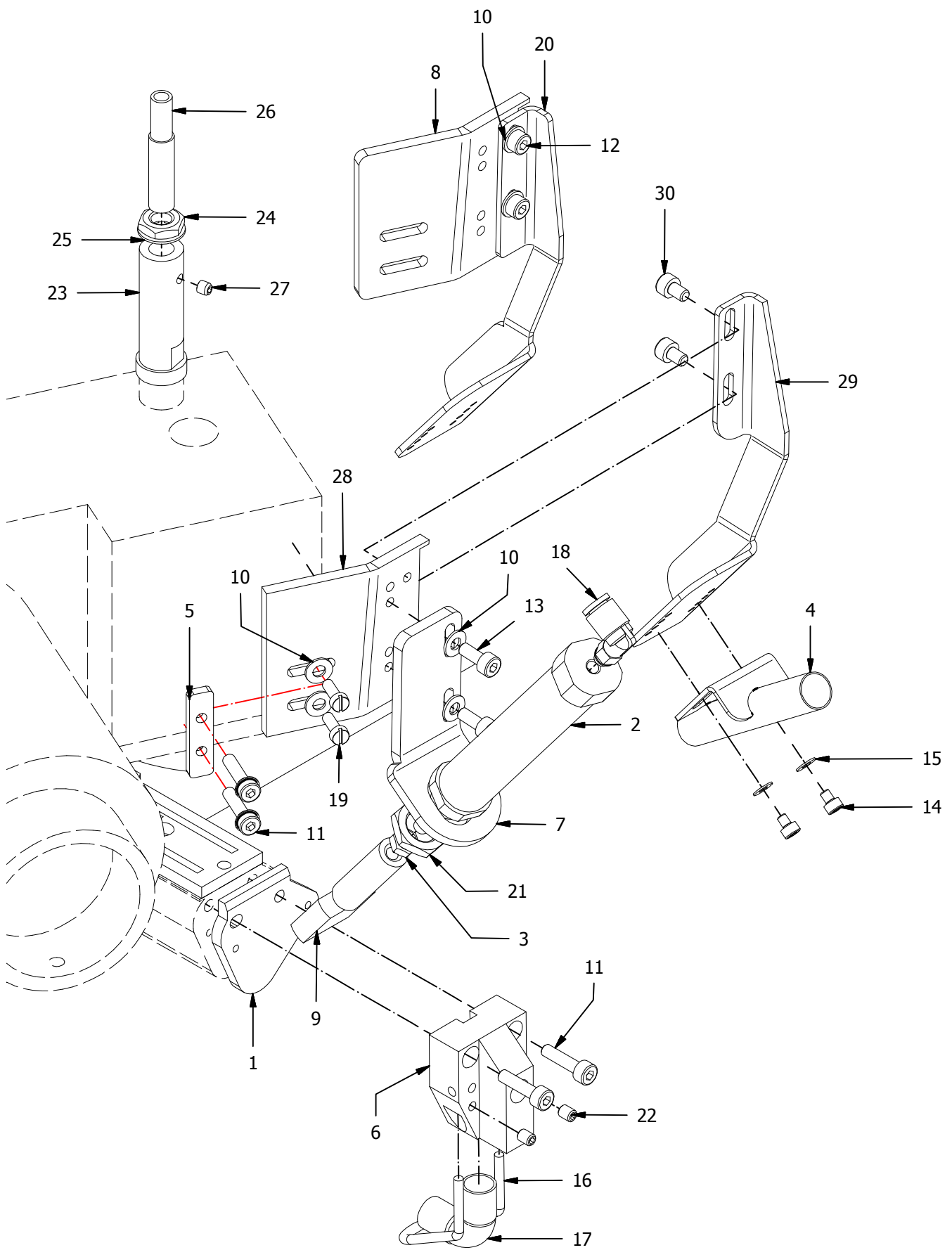
**ELECTRICAL  
DRAWING**



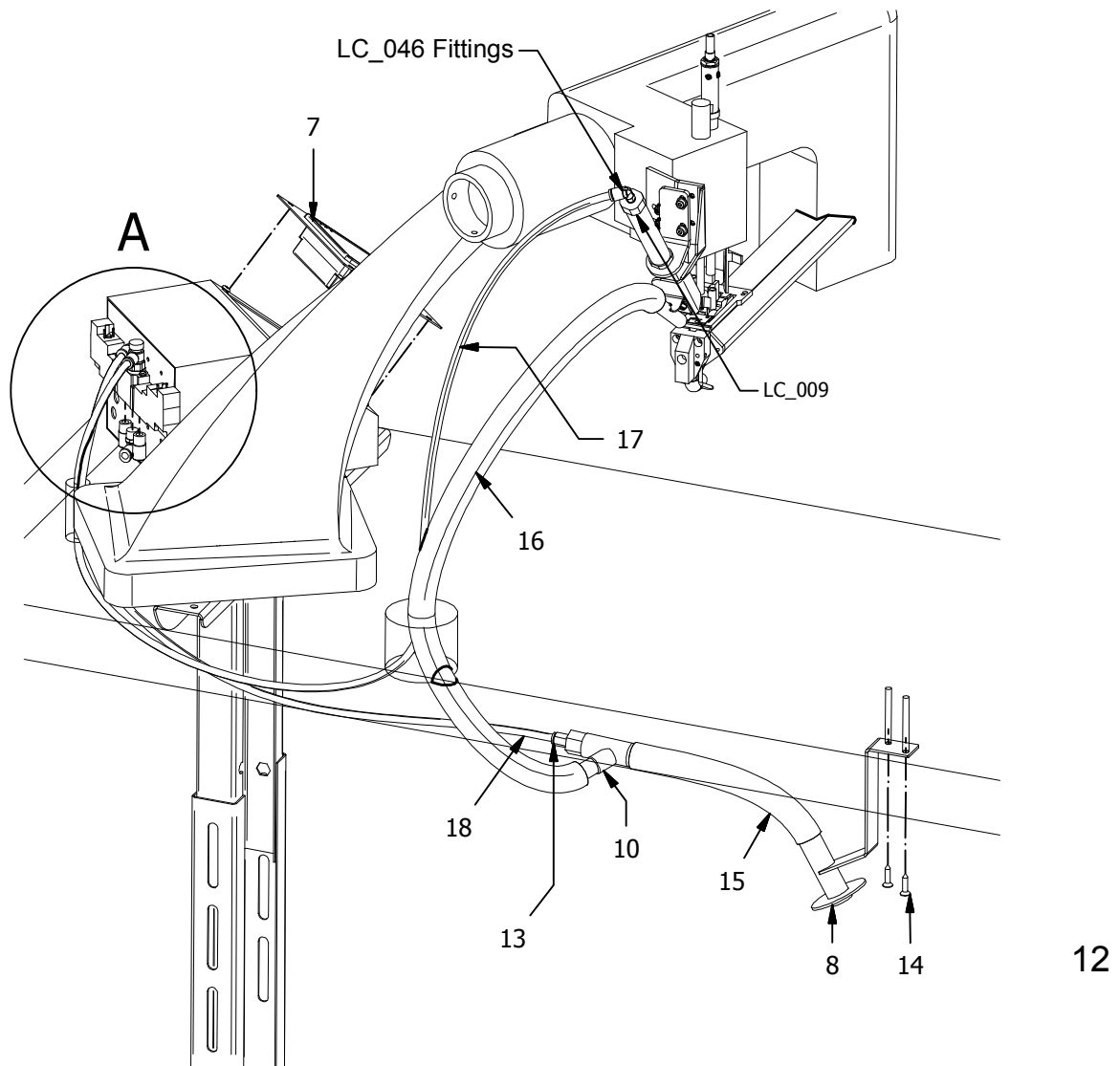
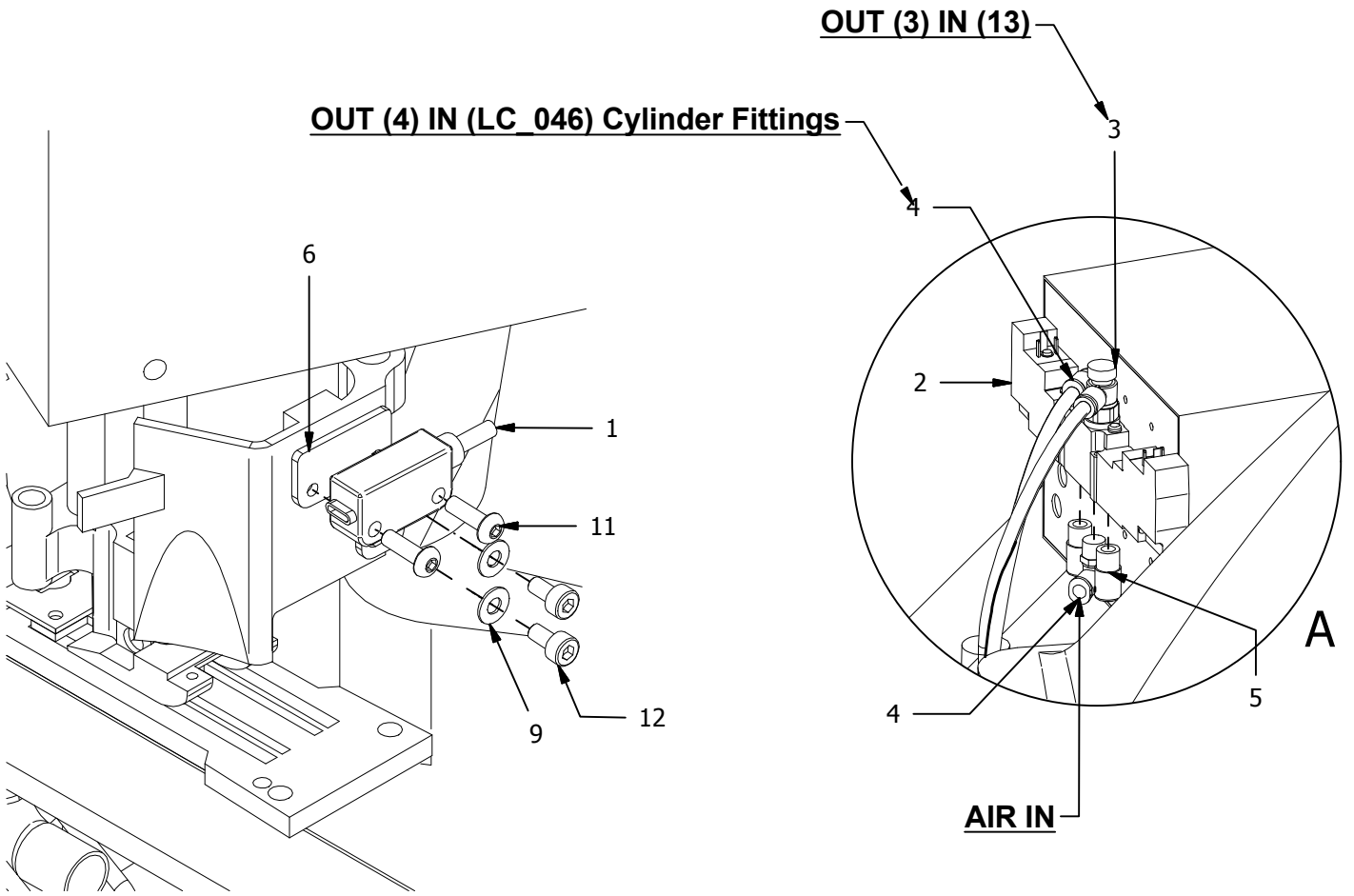


***ELITE* A.G**

**PART LIST**



ITEM	QTY	DESCRIPTION	PART NUMBER
1	1	Bottom Knife	LC_015
2	1	CJ2KB16-35SR	LC_009
3	2	NTJ-015C	LC_017
4	1	Top Type Suction	LC_042
5	1	Optional Connection Part	LC_050_R
6	1	Vacuum Part	LC_013
7	1	Cylinder Connection Part	LC_007
8	1	System Assembly Part	LC_006
9	1	Cutting Head	LC_012
10	6	ISO 7089 - 4 - 140 HV	LC_029
11	4	ISO 4762 - M4 x 16	LC_047
12	2	4762 - M4 x 6	LC_049
13	2	ISO 4762 - M4 x 10	LC_028
14	2	9/64-40x14	LC_047
15	4	ISO 7089 - 3 - 140 HV	LC_033
16	1	Clip Retainer	LC_00
17	1	Fittings	LC_014
18	1	KQ2L-Male Elbow (Gasket Seal)	LC_046
19	2	DIN 84 - M3,5 x 10	LC_030
20	1	Hand Guard	LC_044-1
21	1	CJ2K16Z NUT	LC_16
22	2	Hexagon socket set screws with flat point	ISO 4026 - M4 x 5
23	1	NEEDLE BAR BUSHING(UPPER)LID	LC_051
24	1	M8 NUT	LC_019
25	1	M8 WASHER	LC_020
26	1	E2B-SO8KS02-WP-B1	LC_021
27	2	Hexagon socket set screws with flat point	ISO 4026 - M4 x 4
28	1	System Assembly Part	LC_006
29	1	Hand Guard	LC_044
30	2	Hexagon Socket Head Cap Screw	ISO 4762 - M4 x 6

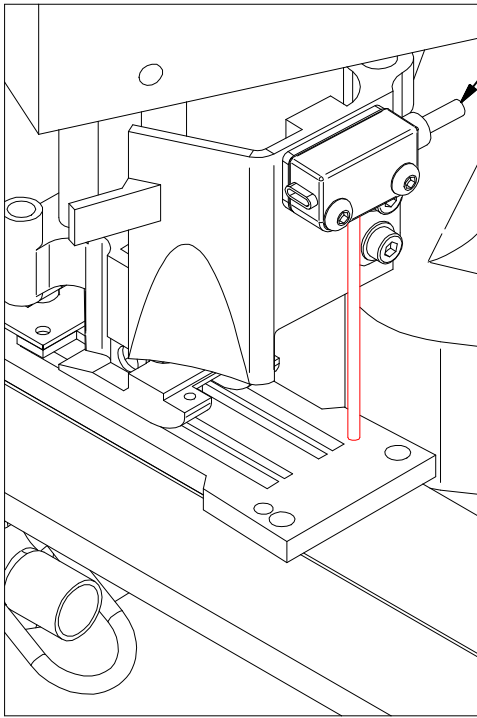


<b>ITEM</b>	<b>QTY</b>	<b>DESCRIPTION</b>	<b>PART NUMBER</b>
1	1	Miniature Photoelectric Sensor	LC_008
2	1	Valve	LC_002
3	1	AS2201F-01-06SA Fittings	LC_003
4	2	KQ2L06-01AS1 Fittings	LC_004
5	2	AN10-01 Exhaust	LC_022
6	1	Sensor Assembly Part	LC_036
7	1	HMI	
8	1	Waste Tunnel Assembly	LC_005
9	4	ISO 7089 - 3 - 140 HV	LC_033
10	1	Vacuum Part	LC_065
11	2	Hexagon Socket Button Head Screw	ISO 7380-1 - M3 x 10
12	2	Hexagon Socket Head Cap Screw	ISO 4762 - M3 x 6
13	1	KQ2H06-M5A Fittings	LC_010
14	6	Tapping Screws	ISO 7050 - M4 x 20
15		Hose	LC_066
16		Hose	LC_067
17		Hose	LC_068
18		Hose	LC_069

***ELITE*** **A.G**

**TECHNICIAN  
MANUAL**

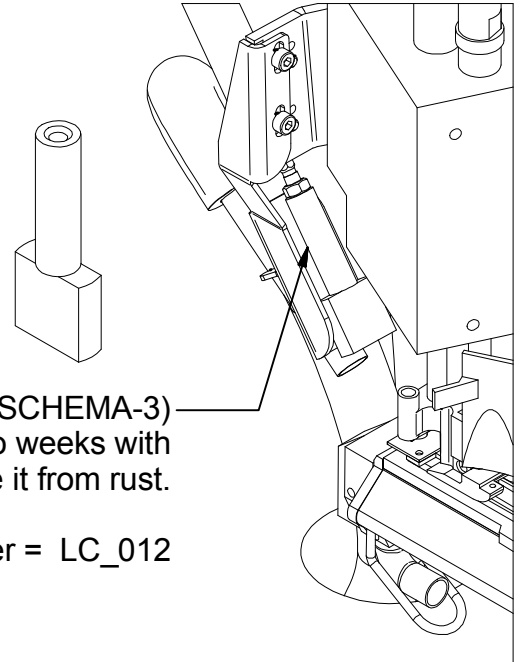
(SCHEMA-2)



**Optical Sensor Adjustment**

1-) Sensor no sensitive adjustment its full automatic.  
(SCHEMA-2)

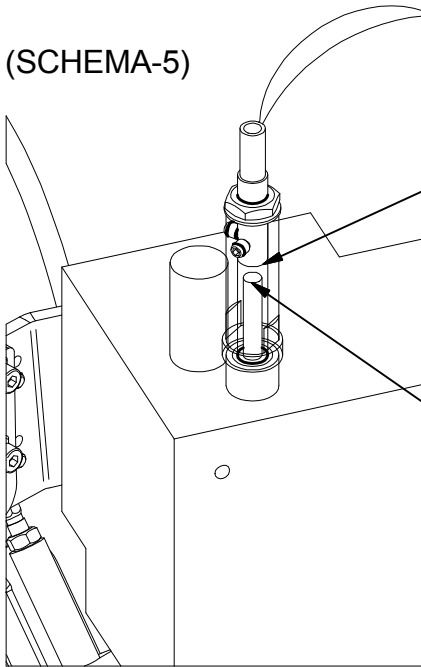
(SCHEMA-3)



(SCHEMA-3)  
Clean this part every two weeks with machine oil to save it from rust.

Part Number = LC\_012

(SCHEMA-5)

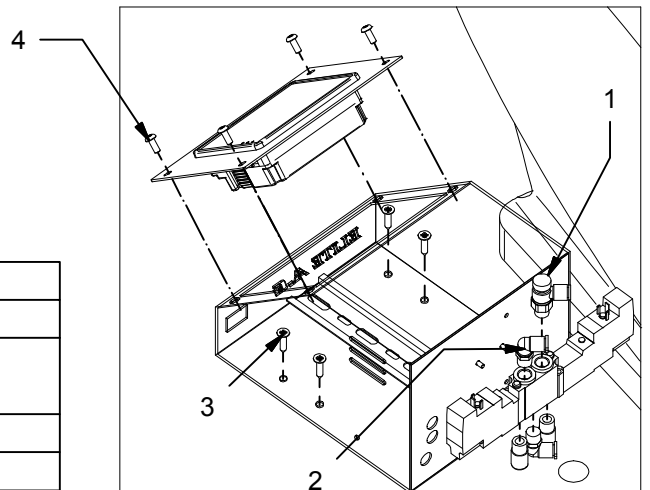


Omron sensor should have 1 mm distance between needle bar at highest position and sensor light should be on.

(SCHEMA-4)

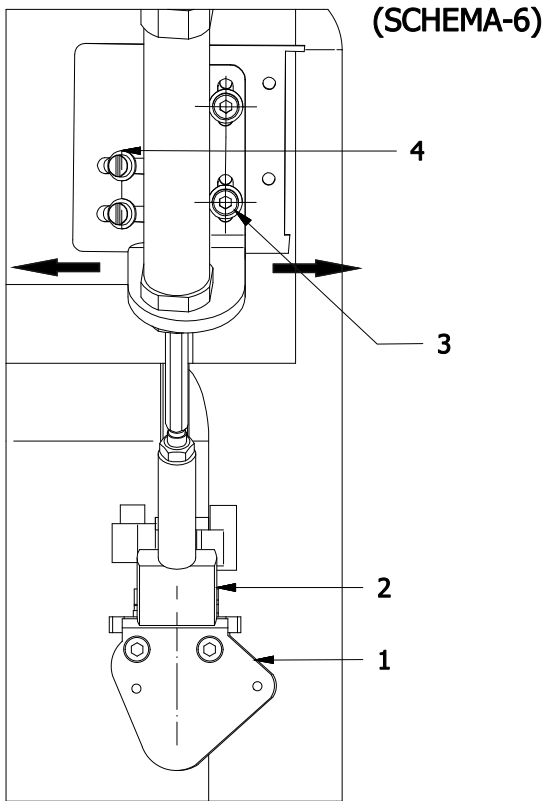
Needle Bar

(SCHEMA-5)



PARTS LIST			
ITEM	QTY	DESCRIPTION	PART NUMBER
1	1	OUT (1) IN (VACUUM PART)	LC_003
2	2	OUT(2) IN (CYLINDER)	LC_004
3	6	Head tapping screws	ISO 7050 - M4x20
4	4	Hexagon Socket Button Head Screw	ISO 7380-1 - M4 x 10





### KNIFE ADJUSTMENT

First Step ;

Install thread cutting system to sewing machine head with screws (4)

Second Step ;

Adjust cutting head (2) and bottom knife (1) to center

Loose screws (3) to adjust distance between knife (1) and cutting head (2)

Tighten screws (3) after cutting head (2) bottom knife touch together with out any gap (SCHEMA-8)

Loose screws (4)

Place cutting head (2) to center of bottom knife (1) tighten screws (4) (SCHEMA-6)

Cut head cutting point and parallelism adjustment (SCHEMA-7)

Center cutting head and bottom knife together (SCHEMA-6)

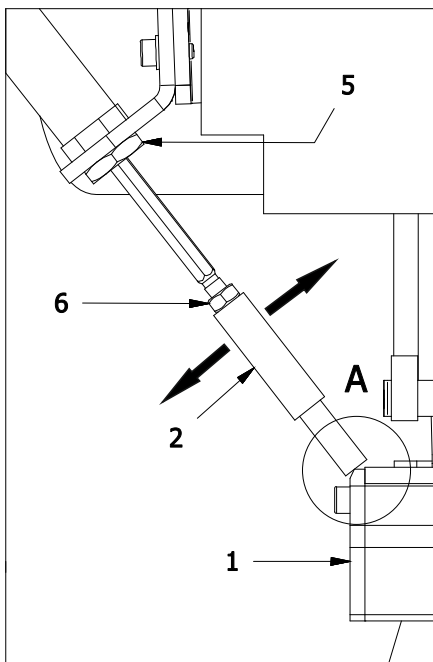
Loose nut to adjust place of cutting head (5)

Place close to center ( SCHEMA-8)

Tighten nut (5)

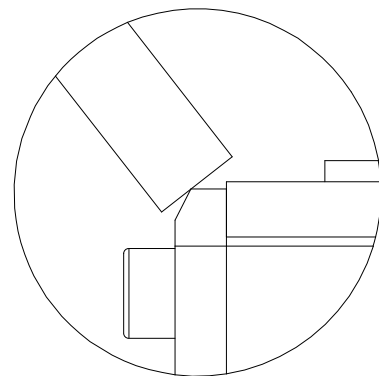
Test System.

NOT : IF CUTTING PROBLEMS HAPENING PLEASE ADJUST PARALLELISM BETWEEN CUTTING HEAD AND CUTTING KNIFE



(SCHEMA-7)

(SCHEMA-8)



PARTS\LIST			
ITEM	QTY	DESCRIPTION	PART\NUMBER
1	1	Bottom Knife	LC_015
2	1	Cutting Head	LC_012
3	2	ISO 4762 - M4 x 10	LC_028
4	2	DIN 125 - A 3,7	LC_031
5	1	CJ2K16Z Nut	LC_16
6	1	NTJ-015C Nut	LC_017

**Yöntem**

**MAKINE SAN.TIC.LTD.STI**

---

**YENIGUN MAHALLESİ BAGCILAR CADDESİ  
615 SK. NO 14/A  
BAGCILAR/İSTANBUL/TURKEY**